

A QUICK INTRODUCTION OF:

Studeō PAR-



Studeō ~ Latin ~ Verb

Definition: I dedicate myself to, I strive after

At its simplest form, **Studeō PAR-** can be considered a land-banking-for-the-arts initiative of Professional Artistic Research (PAR-) Projects — a community-based, arts & education nonprofit located in Northside, Cincinnati. **The goal:** Preserve a place in a developing community where artists can share ideas and increase their collective value.

While we, PAR-Projects, will be utilizing some space for our applied arts education program, the majority of the 15,000 square foot facility is designed to serve as a place to foster creative connections. Keeping in line with the project's name sake, over half of the space will accommodate artists dedicated to their studio practices and creativity-based businesses — all specifically curated to avoid overlaps in disciplines, while promoting as many forms of diversity as possible. To start this energy off on the right foot, the first cohort of resident businesses will be Cincinnati Music Accelerator (a project by People's Liberty grantee Kick Lee), Groove & Knot Co. (a budding creative woodworking studio), SkyVengers Cartoon & Animation Studio (which will also work alongside our applied arts program), as well as a number of master-level makers.

To complement the studios, we will also be opening a new contemporary art gallery — a space charged with becoming a central gathering hub and creative outlet for the tenants of the facility. In the grand scheme of things, with its quaint courtyard and industrial skylights, this space will serve as a relaxed environment for the community to connect and experience high levels of wall-based artwork — *an intentional contrast to the installation-based art gallery we operate at our headquarters next door*. By day it will keep regular hours and every two months, the exhibition space will host reception events to help highlight and promote local, as well as regionally-based artists. In due time, the gallery will also double as a rentable event space, but its primary purpose will be to serve as an entry point for budding artists and ambitious curators of the region.

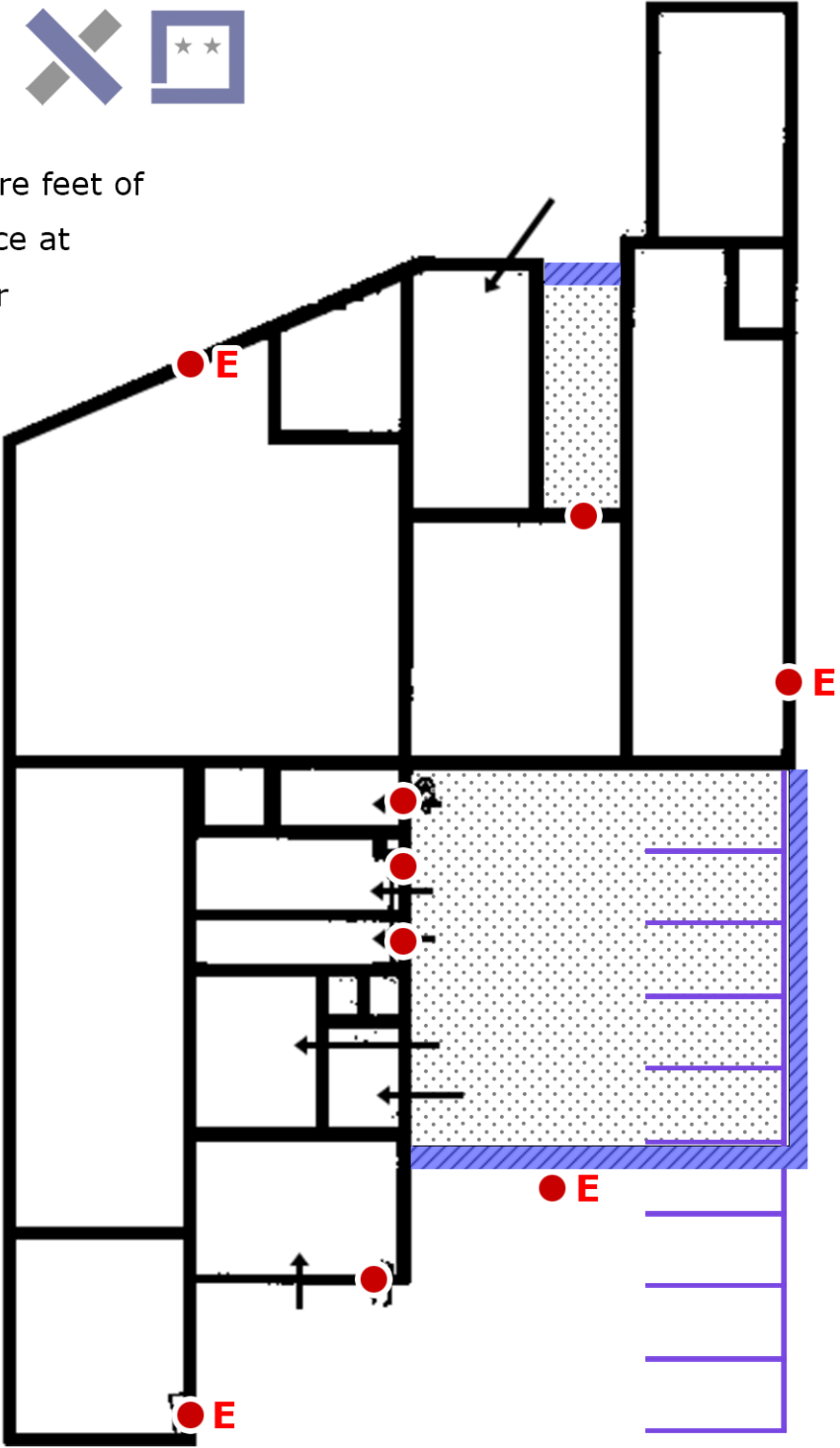
The final planned piece of the facility is quite simply a front-of-house community room designed to be shared with fellow artists and neighbors. Before expanding to just over 800 square feet in year two, the current 500 square foot space will serve as an affordable place that can be rented for classes/workshops and/or borrowed (when available) for civic-minded discussions, artist support groups, etc. And though it has yet to be announced to the public, the space has already hosted community groups such as Chase Elementary's Local School Decision Making Committee (LSDMC).

In essence, when paired with the seasonal community space & installation art gallery we already own next door, Studeō PAR- will help redefine what connection and collaboration can look like in our region's creative community. And being that this is a minority lead initiative, an underlying hope is that the work created at PAR- will also serve as a bridge, a model, and a reminder of what's possible when less barriers are in place.

**Studeō
PAR-**



15,000 square feet of
creative space at
1646 Hoffner



Outdoor Areas

● Building Entrances/Exits



Fenced in areas

● E Emergency Entrances/Exits